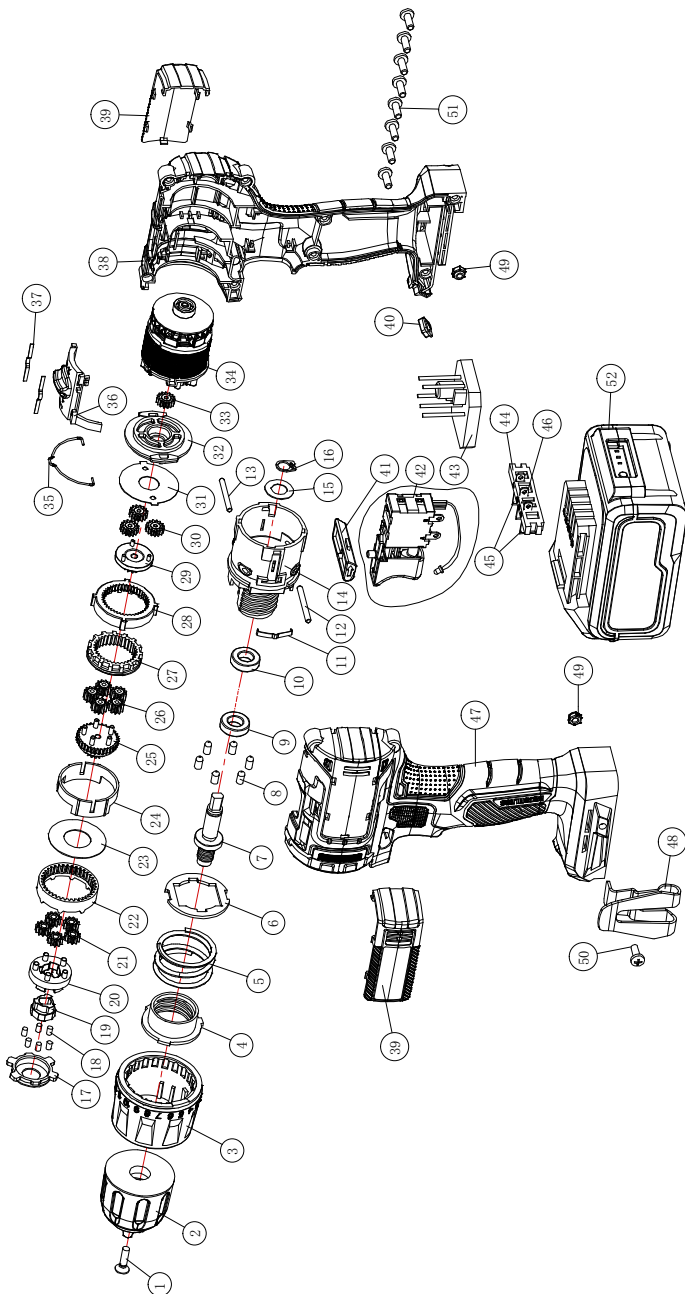


# EXPLODED VIEW & SPARE PARTS LIST

## CORDLESS DRILL RDP-YBD20 Solo



NO.	Description	Materials
1	Cross pan head screws	M5*22-LH
2	drill chuck	
3	Torque sleeve	
4	Torque adjustment disk	PA6+GF30
5	Torque spring	65Mn
6	Torque washer	65Mn
7	Output shaft	40Cr
8	Torque needle roller	Cr12
9	689-2Z deepZZ groove ball bearing	
10	689-2Z deep groove ball bearing	
11	sound film	65Mn
12	Stop shaft 1	Cr12
13	Stop shaft 2	Cr12
14	Gearbox	PA66-GF30
15	Output shaft spacer	65Mn
16	Retaining rings for shafts	65Mn
17	Self-locking ring	powder metallurgy
18	Self-locking pin	Cr12
19	self-locking block	powder metallurgy
20	Third level planet carrier	powder metallurgy
21	Third level planetary gear	powder metallurgy
22	Ring gear	powder metallurgy
23	Middle spacer 0.8mm	65Mn
24	Gear box inner cover	PA6-GF30

25	Secondary planet carrier	powder metallurgy
26	Secondary planetary gear	powder metallurgy
27	Turn the ring gear	powder metallurgy
28	Compensation ring gear	powder metallurgy
29	First stage planet carrier	powder metallurgy
30	First level planetary gear	powder metallurgy
31	Gasket 2 (motor end cover gasket)	65Mn
32	Gear box cover	PA66-GF30
33	106 motor gear	powder metallurgy
34	18V-3820 brushless motor	
35	speed wire	65Mn
36	speed switch	PA6-GF30
37	Shift switch shrapnel	65Mn
38	Right housing + rubber coating	PA6-GF30+TPE
39	decorative cover	ABS
40	Transparent lamp cover	PS
41	Forward and reverse push rod	ABS
42	Switch	
43	controller	
44	Plug socket	
45	Insert (width)	Phosphor bronze nickel plated
46	Insert (narrow)	Phosphor bronze nickel plated
47	Left housing + rubber coating	PA6-GF30+TPE
48	Hang buckle	
49	Hexagonal locking thin nut	Surface galvanized
50	Phillips round head screw PM4*12 black	
51	Cross pan head self-tapping screws	ST3.0*12 black